

Digital Signal Processing Software and Development Tools Selection Guide

**Table of Contents**

eXpressDSP™ Software and Development Tools	1
Code Composer Studio™ IDE, TI Developer Network IDEs and Development Tools	2
JTAG Debug and eXpressDSP Data Visualization	4
Operating System Solutions	5
Algorithm Standards and Frameworks	7
Digital Media Software Portfolio	8
Getting Started	10
TI DSP Developer Network Overview	13
Digital Signal Processing Development Tools Feature Matrix	14
Technical Article – How to Effectively Implement Trace	15
Technical Article – Interprocessor Communication for GPP + DSP Designs	16



eXpressDSP™ Software and Development Tools

eXpressDSP Software and Development Tools

Complete, Real-Time Software and Development Tools for TI Processors

TI's real-time eXpressDSP Software and Development Tools portfolio includes tightly knit ingredients that will empower developers to tap the full potential of TI's TMS320™ DSPs, DaVinci™ and OMAP™ processors. Each element is designed to simplify programming and move development from a custom-crafted approach to a new paradigm of interoperable software from multiple vendors supported by a worldwide infrastructure. There has been an explosive growth in real-time applications demanding the real-time processing power of TI digital signal processing. eXpressDSP tools enable innovators and inventors to speed new products to market and turn ideas into reality. For more information, visit www.ti.com/expressdsp.

Standardization and Software Reuse Move Development to a New Level

- Standards enabled for modular, reusable multi-function applications
- Developers of all experience levels
- Integrate your own software
- Catalog of interoperable software
- Focus on adding value/differentiation
- Designed to cut development time by up to 50 percent and increase the modularity

Learn about TI's offering of development boards and kits to get your design started today (See page 10).

Tools and Standards to Simplify Application Development, Reduce System Cost, Enhance Product Robustness and Innovation and Accelerate Time-to-Market

- Powerful, integrated development environment (IDE) (Code Composer Studio™ IDE)
- Scalable real-time kernel (DSP/BIOS™ kernel)
- eXpressDSP-compliant algorithms (written to the eXpressDSP Algorithm Interface Standard)
- Reusable modular software and support from TI's DSP Developer Network
- Available on TMS320C6000™ and TMS320C5000™ DSPs,

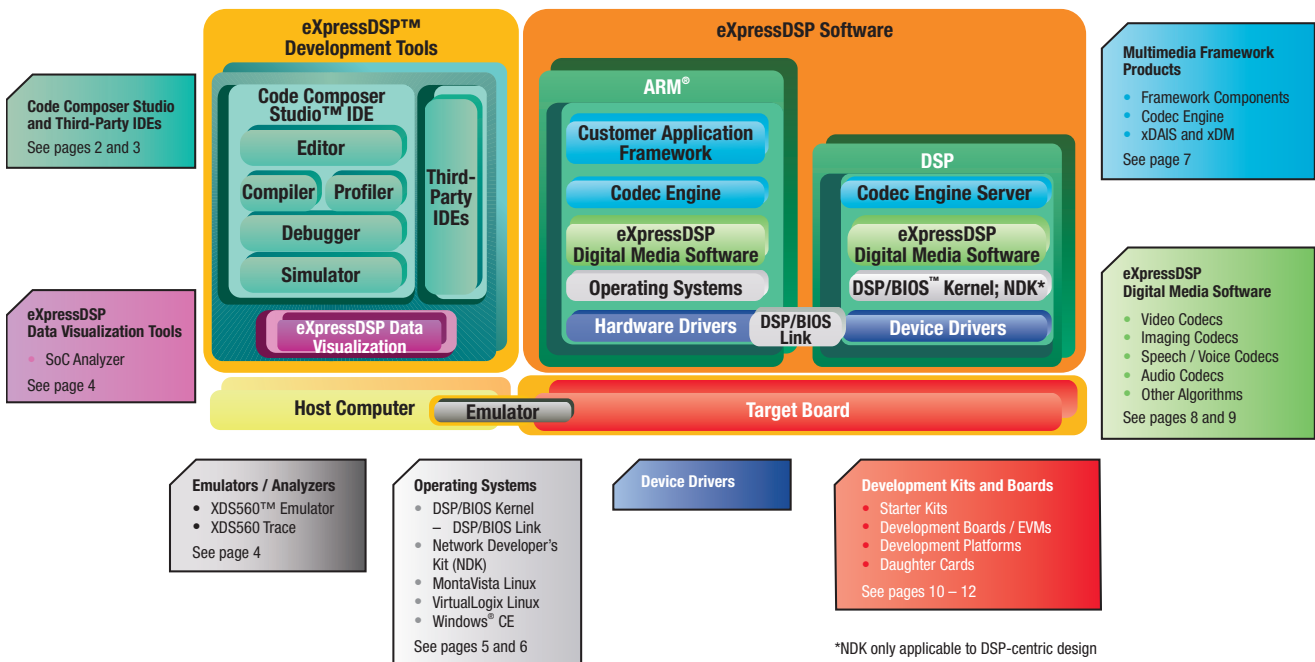
TMS320C2000™ digital signal controllers, OMAP application-specific processors and DaVinci digital media processors

- Advanced data visualization and real-time analysis
- Powerful code generation tools

What Are eXpressDSP Software and Development Tools?

TI's real-time eXpressDSP Software and Development Tools provide a complete and open digital signal processing software environment to simplify and streamline the product development process. It provides access to a large number of reusable software components, host tooling and target-side content to reduce development time.

SoC (ARM® + DSP)



eXpressDSP



eXpressDSP™ Development Tools

Code Composer Studio™ IDE, TI Developer Network IDEs and Development Tools

Integrated Development Environment and Debuggers

Get more information about Code Composer Studio IDE and TI Developer Network development tools at: www.ti.com/ccstudio

Code Composer Studio Development Tools Simplify DSP Development

Code Composer Studio (CCStudio) software is a fully integrated development environment (IDE) supporting Texas Instruments industry-leading DaVinci™, TMS320C6000™, TMS320C5000™, TMS320C2000™ and OMAP™ processor platforms.

IDE

- Integrated IDE and debugger
- CodeWright Editor
- Project manager

Debugger

- Co-debug of ARM®/DSP processors
- Data visualization
- Cache visibility
- Robust host-to-target connection

Real-Time Debug

- Non-intrusive memory access
- Handle interrupts while halted

Advanced Event Triggering

- Watchpoints
- Event sequences
- Non-intrusive counters

Code-Generation Tools

- Industry-leading performance
- Program-level optimization

Simulation

- Cycle accurate simulation
- Rewind back-stepping
- Code coverage

Profiling

- Profile functions and loops
- Measure cache activity
- Profile pipeline stalls

Host Operating System Support

- Windows®
- Linux (compilers only)

Integrated Development Environment

The Code Composer Studio (CCStudio) IDE provides a single-user interface taking you through each step of the application development flow. Familiar tools and interfaces allow users to get started faster than ever before and add functionality to their application thanks to sophisticated productivity tools. The integrated CodeWright Editor greatly improves the code creation experience. Easily manage large multi-user, multi-site projects with the built-in project manager.

Debugger

Code Composer Studio IDE's integrated debugger has DSP-specific capabilities and advanced breakpoints to simplify development. Conditional or hardware breakpoints are based on full C expressions, local variables or CPU register symbols. A General Extension Language (GEL) script file can be executed when a particular breakpoint hits.

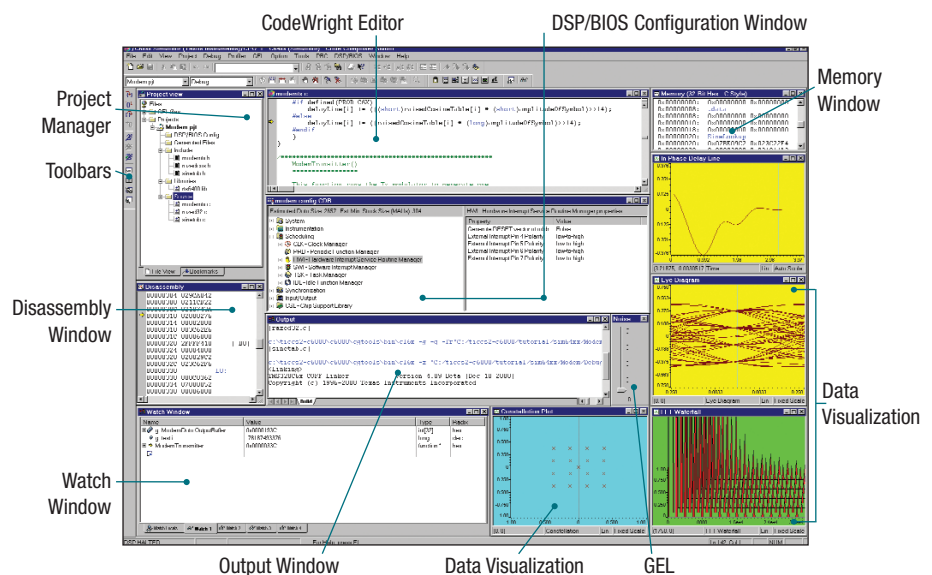
Developers can debug code quickly by selectively stepping into, over or out of C function or assembly subroutines.

The memory window allows you to inspect each level of memory so that you can debug complex cache coherency issues.

Code Composer Studio IDE supports the development of complex systems with multiple boards or multiple processors on a single target board. Global breakpoints are also available for multiprocessor systems. Code Composer Studio's Parallel Debug Manager (PDM) provides synchronized control over multiple processors configured in single- or multiple-scan chains. It can be used to launch individual parent windows to control each processor. The PDM can be used to broadcast commands to different groups of CPUs in the JTAG scan path. A global breakpoint command on one processor can halt other processors when this breakpoint is encountered.

The PDM lets developers open up separate debug windows for any CPU on any board in the system.

Code Composer Studio IDE also supports popular external scripting languages such as Perl and VBA to help developers automate application testing and validation.



Code Composer Studio Development Tools include the features you need to edit, build, debug and visualize your applications.



Real-Time Debug

TI devices include advanced emulation features which provide simple, inexpensive and speed-independent access to the CPU for debugging. Access to registers and memory can be non-intrusive and real-time mode provides for the debugging of code that interacts with interrupts that must not be disabled. Real-time mode allows you to suspend background code at break events while continuing to execute time-critical interrupt service routines.

Advanced Event Triggering

Advanced Event Triggering (AET) allows a user to halt the CPU or trigger other events based on complex events or sequences. These events include invalid data memory accesses and invalid program accesses. It can also non-intrusively measure performance and count system events (for example, cache events).

Code-Generation Tools

In the past, developing high-performance DSP code has required optimizing assembly code by hand and an intimate knowledge of the particular device architecture. The TI Code Composer Studio compiler tools address this need by shifting the burden of optimization from hand-coded assembly to the C compiler. With these tools it is possible to exploit the high performance of TI processors without ever writing hand-coded assembly.

TI compilers can perform program-level optimizations that evaluate code performance at the application level. With a program-level view, the compiler is able to generate the small, fast code an assembly program developer with a full system view would generate. This application-level view is leveraged by the compiler to make trade offs that significantly increase performance.

Simulation

Simulators provide a way for users to begin development prior to having access to a development board. Simulators also have the benefit of providing enhanced visibility into application performance and behavior.

Several simulator variants are available allowing users to trade off cycle accuracy, speed and peripheral simulation, with some simulators being ideally suited to algorithm benchmarking and others for more detailed system simulation.

The Rewind feature allows you to step and run backward to trace the source of a problem. There is no need to restart the execution of the program. Full reverse mode visibility is available through watch, register and memory windows.

Watchpoints allow the user to stop his code on data read or write to a particular memory location. Track memory corruption problems using this feature.

The Interrupt Latency Detector enables you to measure the worst-case interrupt latency of the code, including programming interrupt constraints such as disabling GIE/NMIE and architectural behavior such as non-serviceability of interrupts in branch delay slots.

Pipeline analysis of a TMS320C55x™ DSP shows both the stalls and their causes through a detailed pipeline visibility.

Code Coverage shows which source lines (both C and assembly) are executed.

The CacheTune tool tracks program, data cache activities visualized over time – most effective for improving cache utilization.

Real-Time Data Exchange

Real Time Data Exchange (RTDX™) and High-Speed RTDX (HS-RTDX) allow a developer to exchange data between the target and the host PC without stopping the target application, thus providing a bi-directional “data pipe” between the application and the host. This allows developers to access data from the application for real-time visibility, or to simulate data input to the device, shortening development time by giving developers a realistic view of the way their systems operate.

Profiling

Code Composer Studio IDE's interactive profiler makes it easy to quickly measure

code performance and ensure the efficient use of the DSP target's resources during debug and development sessions. The profiler allows developers to easily profile all C/C++ functions in their application for instruction cycles or other events such as cache misses/hits, pipeline stalls and branches. Profile ranges can be used to concentrate efforts on high-usage areas of code during optimization, helping developers produce finely-tuned code. Profiling is available for ranges of assembly, C++ or C code in any combination. To increase productivity, all profiling facilities are available throughout the development cycle.

Developer Network Development Tools

TI is committed to enabling third-party development tools partners to support our ARM®- based SoC devices.

GreenHills MULTI®

MULTI is a complete integrated development environment for embedded applications using C, C++ and Embedded C++. The MULTI debugger offers an excellent environment for debugging of SoC devices containing both ARM and the TMS320C64x+™ DSP core. MULTI also offers OS-aware debugging for several operating systems including INTEGRITY, velOSity, u-velOSity, MontaVista Linux and DSP/BIOS™ kernel. For more information on GreenHills MULTI please contact sales@ghs.com.

Lauterbach Trace32

Trace32 is an ARM debugger that also supports debugging of TI DSPs and thus can provide co-debug support for the ARM and DSP on TI SoC devices. Lauterbach also provides OS aware debugging for most embedded operating systems including Linux. For more information please visit www.lauterbach.com.

Code Composer Studio full-function evaluation tools are available for a free 120-day evaluation. To order your CD-ROM, visit www.ti.com/freetools



eXpressDSP™ Development Tools

JTAG Debug and eXpressDSP Data Visualization

Emulators and Analysis Tools

Get more information about JTAG debug and eXpressDSP data visualization tools at: www.ti.com/emulatoranalyzer

Real-Time execution visibility is the key to optimizing and debugging systems. Emulators provide a connection to a target for execution control and system visibility. eXpressDSP Data Visualization Tools-based solutions graphically simplify complex, interrelated data sets.

XDS560™ Emulator

The XDS560 Emulation platform provides a robust and reliable IEEE 1149.1 JTAG connection to the target device. It provides high-speed download speeds, Advanced Event Triggering (AET), and High Speed Real-Time Data Exchange (HS-RTDX) capability.

Non-Intrusive Debugging

TI devices include advanced emulation features which provide simple, inexpensive and speed-independent access to the CPU for debugging. Access to registers and memory can be non-intrusive and real-time mode provides for the debugging of code that interacts with interrupts that must not be disabled. Real-time mode

allows you to suspend background code at break events while continuing to execute time-critical interrupt service routines.

- Advanced Event Triggering (AET) allows a user to halt the CPU or trigger other events based on complex events or sequences such as invalid data or program memory accesses and invalid program accesses. It can non-intrusively measure performance and count system events (for example, cache events).
- Real Time Data Exchange (RTDX) and High-Speed RTDX (HS-RTDX) allow a developer to exchange data between the target and the host PC, without stopping the target application, thus providing a bi-directional “data pipe” between the application and the host. This allows developers to access data from the application for real-time visibility, or to simulate data input to the device, shortening development time by giving developers a realistic view of the way their systems operate.

XDS560 Trace

The XDS560 Trace module helps customers find previously “invisible” complex real-time bugs. Trace can detect the really hard to find bugs – race conditions between events, intermittent real-time glitches, crashes from stack overflows, runaway code and false interrupts without stopping the processor. Trace is a completely non-intrusive debug method that relies on a debug unit inside the DSP so it does not interfere or change the application’s real-time behavior.

Trace can fine tune code performance and cache optimization of complex switch intensive multi-channel applications. It enables real-time code and event profiling as well as fast and accurate code analysis with profiling, cache view and code coverage for some of the most popular TMS320 devices today used in applications such as video conferencing and medical imaging.

SoC Analyzer Data Visualization Tool

eXpressDSP Data Visualization SoC Analyzer is TI’s high-level system tuning and visibility tool which enables developers to visualize SoC streaming data rather than be limited to post-mortem static data analysis. By being able to capture and graphically display system interactions and load distribution, isolate bottlenecks, identify unexpected behaviors and benchmark application performance, developers are able to maximize efficiency and overall performance while eliminating tedious manual data collection and comparison. This tool is non-invasive and aids in analyzing and identifying problems by capturing and graphically displaying: system interaction, load distribution, bottlenecks in data throughput and other types of behavior.

```

Trace Display - Blackhawk USB560m - C64xx Emulator/TMS320C6400_0 [1]
Blackhawk USB560m - C64xx Emulator/TMS320C6400_0 [1]
Control... Start Resume << Query >> Filter... Fields... Save...
Program... Source Disassembly Cycles [abs] [cyc] Read Ad... Read Data
00004A74 b = a1; STV D2T2 0
00004A7C b ** RecurseFunc(a1 -1); B S1 3
00004A44 { STV D2T2 9
00004A54 int b = 0; MVK I2 15
00004A60 if(a1 == 1) CMPEQ I2X 19
00004A74 b = a1; STV D2T2 26
00004A7C b ** RecurseFunc(a1 -1); B S1 29
00004A44 { STV D2T2 35
00004A54 int b = 0; MVK I2 41
00004A60 if(a1 == 1) CMPEQ I2X 45
00004A74 b = a1; STV D2T2 52
00004A7C b ** RecurseFunc(a1 -1); B S1 55
00004A44 { STV D2T2 61
00004A54 int b = 0; MVK I2 67
00004A60 if(a1 == 1) CMPEQ I2X 71
00004A74 b = a1; STV D2T2 78
00004A7C b ** RecurseFunc(a1 -1); B S1 81
Receiver stopped due to user request Device Clock Freq = 1000.000Mhz Trace Data Freq = 333.300Mhz
C:\CCStudio_v3.1\MyProjects\lillyprog\callfuncs.c
a1 = a1 * a2;
return a1;
}
/*
 * ***** RecurseFunc *****
 */
int RecurseFunc(int a1)
{
int b = 0;
return 1;
}
b = a1;
b ** RecurseFunc(a1 -1);

```

Blackhawk XDS560 Trace delivers non-intrusive, real-time data capture to expose the toughest real-time bugs.

Read more about real-time debug at
www.ti.com/emulatoranalyzer



Operating System Solutions

DSP/BIOS™ Real-Time DSP Kernel and ARM® Operating Systems

Get more information about DSP/BIOS real-time kernel and ARM operating systems at: www.ti.com/expressdsp

Complete Operating System Solutions for Both ARM and DSP-Based Devices

- DSP/BIOS real-time kernel
 - Available royalty-free with Code Composer Studio™ (CCStudio) integrated development environment (IDE)
 - Supports DaVinci™, OMAP™, TMS320C6000™, TMS320C5000™ and TMS320C2000™ processors
 - Provides deterministic, preemptive multithreading
 - DSP/BIOS Link provides ARM–DSP program loading and communications services
- Network Developers Kit (NDK)
 - Integrated with DSP/BIOS kernel
 - Provides standard TCP/IP networking services
 - Includes higher-level applications such as HTTP, TELNET, DNS and DHCP
- MontaVista Linux
 - Stable, robust, proven embedded Linux
 - Fully supported and maintained by MontaVista
 - Available for DaVinci and OMAP processors
- Microsoft Windows® CE
 - Available on select ARM-based DaVinci and OMAP processors through TI's Authorized Software Providers (ASPs)
- VirtualLogix Linux
 - Full-featured embedded Linux complete with drivers
 - Co-exists with DSP/BIOS kernel via real-time VLX virtualization technology
 - Available on select TMS320C64x+™ DSP core-based processors

DSP/BIOS Software Kernel Foundation

DSP/BIOS kernel is a robust multithreading kernel, proven in thousands of embedded applications, and is augmented by the NDK embedded networking stack and DSP/BIOS Link ARM–DSP communications and control software. DSP/BIOS kernel is highly scalable to minimize footprint requirements.

DSP/BIOS kernel provides preemptive multithreading, cache and interrupt management and a selection of interprocessor communication services, including mailboxes, semaphores and variable-length message passing that works transparently across single- and multi-core configurations.

To aid debugging of complex applications, DSP/BIOS kernel includes real-time logging services that are integrated with the CCStudio IDE graphical real-time analysis displays. DSP programmers can view the sequence of thread execution, CPU load, or use a low-overhead printf for custom instrumentation.

DSP/BIOS kernel is frequently deployed as the real-time DSP kernel on multicore devices like TI's DaVinci and OMAP SoC processors. In such applications, the DSP/BIOS Link inter-processor communication provides powerful interconnection service to ARM-side operating systems like Linux and Windows CE. DSP/BIOS Link is typically used with TI's codec engine, as shown in the DaVinci software pages of this guide (see page 11).

Open Source Community Linux

TI provides the latest cutting-edge Linux release for its devices. Support for TI devices is provided directly in the mainstream Linux development tree (GIT tree) and may be downloaded at no charge. Development tool support is provided through Code Sourcery's Sourcery G++™. Sourcery G++ includes the GNU C and C++ compilers and the Eclipse™

IDE. Sourcery G++ for ARM supports TI processors with an ARM® core, including the OMAP processor family, runs on GNU/Linux® and Windows® and targets GNU/Linux, uClinux™ or EABI (bare board) systems. Sourcery G++ Professional Edition features unlimited support from CodeSourcery's expert engineers, and Personal Edition is affordably priced for individual and small development teams. TI sponsors the OMAP and DaVinci Linux communities that provide the option to participate in the latest kernel version development. An active community support mailing list is available through the OMAP Linux Community at linux.omap.com.

MontaVista Linux

For developers who prefer a Linux OS backed by a commercial support operation, TI also partners with MontaVista. MontaVista Professional Edition Linux provides tools for build, debug, profiling and analysis on the host coupled with a full set of hardened drivers and a rich complement of target-based software components. MontaVista licenses may be purchased as part of the TI Digital Video Software Production Bundle (DVSPB), which entitles the license holder to updates on the MontaVista Zone customer portal. For more information on the DVSPB, visit www.ti.com/dvspb.

Windows Embedded CE

Windows Embedded CE is a componentized, real-time operating system for a wide range of small footprint devices. Developers use Windows Embedded CE

DSP/BIOS is available royalty-free with the Code Composer Studio full-function evaluation tools. To order your CD-ROM, visit www.ti.com/freetools



Operating Systems

for a variety of smart, connected, and service-oriented devices, ranging from power-conscious GPS handhelds to real-time, mission-critical industrial controllers. TI offers a Windows CE DVSDK today for OMAP35x and TMS320DM644x processors.

OMAP35x support is available on Windows Embedded CE 6.0, along with Platform Builder, a Visual Studio 2005 plug-in, provides an integrated development environment (IDE) that enables you to build both application and Windows Embedded CE 6.0 operating system software in a familiar environment while

improving existing or creating new embedded devices. Along with a portfolio of hundreds of carefully tested operating system components, the innovative tools and features help Windows Embedded CE 6.0 enhance performance, security features, compatibility and flexibility.

USB-Powered, Desktop-Performance and Community-Supported OMAP™ Development Platform You Cannot Afford to Miss

The USB-powered Beagle Board is a low-cost, fan-less single board computer that unleashes laptop-like performance and expandability without the bulk, expense or noise of typical desktop machines. The Beagle Board enables you to flesh out your innovative ideas in conjunction with a large and growing open source development community and utilizes expansion via a wide range of standard PC peripherals. When it becomes necessary to work with greater hardware customization capabilities or to utilize off-the-shelf software, look to the OMAP35x Evaluation Module from Texas Instruments (www.ti.com/omap35x).

Specifications include:

Hardware:

- OMAP 3530 processor
 - ARM® Cortex™-A8 CPU
 - HD-capable C64x+™ CPU
 - 3D graphics acceleration
- 256-MB LPDDR RAM*
- 256-MB NAND Flash memory
- On-The-Go high-speed USB port
- Host-only high-speed USB port*
- 8-bit SD/MMC 6-in-1 connector
- DVI-D out
- S-video (TV) out
- Stereo audio out/in
- JTAG in-circuit emulation header

* New for Rev C.

** See more at beagleboard.org/project

- USB/5-V power options
- LCD*/serial expansion headers

Software:

- Bootloader
- Diagnostic Linux kernel and tests
- Library of open source projects**

Applications of Beagle:

- Silent digital media center
- Web browser (Firefox 3)
- 3D and open source gaming
- Android-based appliances
- Video codec development
- Video conferencing
- Thin clients
- Low-power, low-cost desktop
- Autonomous robots
- Wearable computers
- Digital signs or photo frames
- Netbook development
- Intelligent security cameras
- Automotive vision and media
- Software-defined radio
- Home automation
- And many more...!

Hardware expansion:

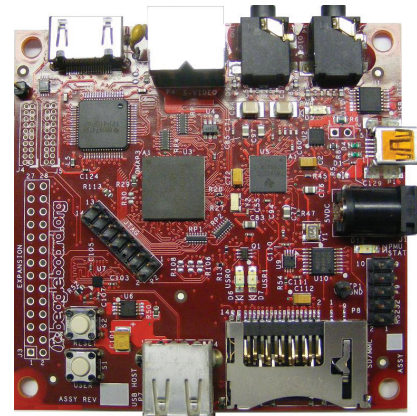
- 802.11b/g/n networking
- 3G wireless modems
- Web cameras
- Analog I/O
- HDTVs

- DLP® projectors
- Much more...

BeagleBoard.org

BeagleBoard.org promotes and motivates Open Source software development on OMAP processor-based systems, with over 1,000 developers already participating. The key objectives are to:

- Enable innovators and hobbyists to explore new domains and experiment with their ideas on an open platform
- Enable such experiments to be conducted cost effectively and thereby nurture innovation
- Provide a community collaboration point for OMAP processor platform developers



Go to beagleboard.org to order your Beagle Board (\$159 USD) today!



Algorithm Standards and Frameworks

Standards for Algorithm Interoperability and Integration

Get more information on algorithm standards and frameworks at: www.ti.com/frameworks

The xDAIS and xDM standards simplify integration of multiple algorithms into an application. Framework Components enable users to easily develop frameworks that can use xDAIS-compliant algorithms. Codec Engine is a low-level framework that automates instantiation of xDAIS and xDM-compliant algorithms.

- xDAIS and xDM
 - eXpressDSP™ Algorithm Interface Standard (xDAIS)
 - xDAIS for Digital Media (xDM)
 - Well-established standard first introduced in 1999
 - Enhanced in 2006 to support DaVinci™ digital media API
- Framework Components
 - Off-the-shelf modules for querying and allocating xDAIS algorithm memory and DMA resources
- Codec Engine
 - Automated instantiation of xDAIS/xDM algorithms, including resource allocation
 - Transparent remote or local execution
 - Easily incorporated into higher-level frameworks

TI's multimedia framework products include the xDAIS and xDM algorithm standards and the Codec Engine algorithm execution framework.

eXpressDSP Algorithm Interoperability Standard (xDAIS)

xDAIS and the eXpressDSP Digital Multimedia (xDM) standards leverage the ability of DSPs to perform a wide range of multimedia functions on a single device. xDAIS accelerates “time-to-revenue” by eliminating integration problems caused by algorithms having hard-coded access to system resources that must be shared with other algorithms. xDAIS forces an algorithm to let the application framework decide which resources to allocate.

xDM specifies a standard API for the application to call a particular algorithm class, enabling an integrator to quickly change to an algorithm from a different source if different functionality or performance is required. The xDM standard defines APIs for several classes of codecs, including video decode/encode and audio encode/decode.

eXpressDSP Framework Components

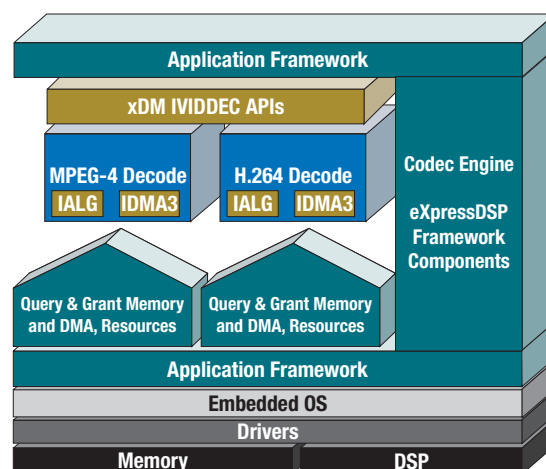
For developers who wish to develop eXpressDSP-compliant frameworks, TI

provides low-level components (DSKT, DMAN3) that enable a framework to query xDAIS-compliant algorithms for their memory and DMA resources and then allocate them.

Codec Engine

Codec Engine is an algorithm execution framework that automates the invocation and instantiation of eXpressDSP-compliant algorithms. Codec Engine can execute in ARM®-only, ARM+DSP or DSP-only environments and supports concurrent execution of multiple channels and algorithms. Codec Engine is designed to be used in conjunction with higher layer frameworks or middleware that provide A/V synchronization, I/O and network services while calling Codec Engine for algorithm-processing operations. This approach enables system providers to easily differentiate their applications. Codec Engine is currently available for Linux and Windows® CE on ARM-based devices and for DSP/BIOS™ kernel on DSPs.

An important feature of Codec Engine is the consistent APIs that it provides across TI SoC and DSP devices, enabling scalable development for multiple TI devices and easier migration to new TI architectures.



Use of xDAIS and xDM APIs enable easy integration of multiple algorithms into an application.

For further technical information or for no charge downloads of multimedia framework products, go to www.ti.com/mfp



eXpressDSP™ Digital Media Software

Digital Media Software Portfolio

Encoders, Decoders, Codecs and Libraries

Get more information about eXpressDSP Digital Media Software at: www.ti.com/digitalmediasoftware

eXpressDSP Digital Media Software is a set of production-tested encoders, decoders, codecs and libraries that address the most common media processing functions required by embedded product OEMs.

Features and Benefits

- High-quality encoding
 - Tested against PC-based reference encoders to within 0.5 dB PSNR at typical bit rates
- Robust, error resilient decoding
 - Tested with ITU standard test streams and error streams
- Application-specific libraries
 - Video Analytics for security applications
 - Graphics for 2D and 3D video on DaVinci™ technology
- All TI Digital Media Software is compliant to the xDM API and integrated with the DaVinci software infrastructure
- TI Digital Media Software is available through the TI eStore at www.ti.com/codecbundles or through TI Authorized Software Providers (complete list can be found at www.ti.com/asp)

Request your free evaluation of TI digital media software at www.ti.com/requestfreesoftware

eXpressDSP Digital Media Software is production tested and optimized for TI DSP and SoC platforms. Instead of investing time and effort in standardized media encoders, decoders and libraries, OEMs are able to save years of development time and can focus development efforts on differentiating product features. eXpressDSP Digital Media Software is available for free evaluation on TI EVMs, and numerous flexible production licensing options exist to fit any development need.

Visit www.ti.com/digitalmediasoftware to:

- Evaluate or purchase digital media software for your TI DVEVM or DVDP board.
- Learn more about flexible production licensing that allows for a range of pricing options based on project quantity
- View published suggested resale pricing options.

Unlike example software or freeware, digital media software components all follow stringent coding guidelines. Each module includes a re-targetable production library featuring reentrant code. Each module is fully documented with a data sheet, release notes, user guide and usage examples. All digital media software is unit tested and system tested with thousands of test vectors in world-class testing labs. The encoders and decoders are hardened with a wide range of test vectors from end equipments and applications in which TI digital media software is deployed: wireless handsets, wireless networking equipment, video/IP phones, streaming media appliances, set-top boxes and video infrastructure to name just a few.

Broad eXpressDSP Digital Media Software Portfolio

Codecs	Target Hardware					
	DM646x	DM644x	DM643x	DM648	DM3x	OMAP35x
Video & Imaging						
H.264 Video Dec	✓	✓	✓	✓		✓
H.264 Video Enc	✓	✓	✓	✓		✓
JPEG Imaging Dec	✓	✓	✓	✓	✓	✓
JPEG Imaging Enc	✓	✓	✓	✓	✓	✓
MPEG-2 Video Dec	✓	✓	✓			✓
MPEG-2 Video Enc		✓				
MPEG-4 Video Dec		✓	✓	✓	✓	✓
MPEG-4 Video Enc		✓	✓	✓	✓	✓
VC1 Video Dec	✓	✓	✓			
Audio						
AAC Audio Dec	✓	✓	✓	✓	✓	✓
AAC Audio Enc	✓	✓	✓	✓	✓	✓
MP3 Audio Dec	✓	✓	✓	✓	✓	✓
MP3 Audio Enc		✓			✓	
WMA Audio Dec/Enc	✓	✓	✓	✓	✓	✓
Voice						
G.711 Dec/Enc	✓	✓	✓	✓	Open Source	✓
Other						
Network Developer Kit (NDK)			✓	✓	Open Source	



Authorized Software Providers Support TI Digital Media Software

The TI Digital Media Software portfolio is a collection of optimized encoders, decoders, codecs and libraries licensed by TI and by TI Authorized Software Providers (ASPs) to customers worldwide. Each software component was developed by TI or by TI Developer Network members in

compliance with the xDAIS eXpressDSP algorithm interface standard and xDM extension for digital media, and each component is packaged for easy integration with DaVinci™ and eXpressDSP software framework building blocks. The entire portfolio is available with support

from highly qualified, trained ASPs, who can also offer additional software IP products or custom engineering services to enable rapid time to market for TI customers.

Authorized Software Providers by Region

ASP	Region						
	Americas	Europe	China	Japan	Korea	India	Asia – Other
AEME	✓	✓	✓	✓	✓		✓
eInfochips	✓	✓				✓	
eSOL				✓			
Ingenient	✓	✓	✓	✓	✓		✓
Ittiam	✓	✓	✓	✓	✓	✓	✓
LogicPD	✓						
MPC Data		✓					
NSU					✓		
SEED Electronic Tech.			✓				
TES Electronic Solutions	✓	✓					
Wintech Digital			✓			✓	✓

Customers have several entry points to designing with TI SoC and DSP processors, ranging from high-level frameworks and applications to low-level functions. The concept of multiple development entry points is also incorporated in eXpressDSP Digital Media Software, which enables a low-level entry point at the codec API layer and also allows higher-level entry points

through Codec Engine and application software built on it. Because all TI digital media software components have been tested and integrated with Codec Engine and the full DaVinci software infrastructure, mid-level entry points are fully enabled. Even higher-level entry points are possible via applications and operating systems built on the DaVinci software foundation;

some examples include Windows® CE with the DirectShow media framework and GStreamer for Linux.

To request a free software evaluation, sign up for updates or ask questions, go to "Contact Me" at www.ti.com/requestfreesoftware



eXpressDSP™ Software and Development Tools

Getting Started

Integrated Development Environment, Codecs, Training and Kits

Code Composer Studio™ Integrated Development Environment Free Evaluation Tools

- Supports TMS320C2000™, TMS320C5000™, TMS320C6000™, OMAP™ and DaVinci™ processors
- 120-day full-featured trial
- On-line tutorials and multimedia feature demos show off key capabilities
- Order CD-ROM on-line or download at www.ti.com/freetools

Evaluation Codecs

- High-quality, production tested encoders, decoders, codecs and other digital media software modules and algorithms
- Free supported 60-day software evaluation
- More information on digital media software, including a complete inventory, can be found at www.ti.com/digitalmediasoftware

Training

- Workshops
- On-line training
- View on-line at www.ti.com/training

Development Kits and Boards

- DSP starter kits (DSKs) offer complete low-cost evaluator's bundles including development tools and hardware
- Evaluation modules (EVMs) include a wide range of TI and third-party development boards and production bundles
- Development platforms combine production-ready, application-specific software and hardware in an easy-to-use development environment for rapid prototyping
- Daughter cards and plug-on modules compliment TI or third-party DSKs and development boards

TI and members of the TI DSP Developer Network offer a wide range of hardware and software getting started kits and production-ready solutions to jump start new designs. These bundled solutions are an excellent way to evaluate TI processors, digital media codecs and test drive the eXpressDSP tools offering to begin application development. Many production-ready bundles include full software licenses, production-ready software and stand-alone emulators to take an application into production. A wide selection of daughter cards is also available to add capability and new hardware features. Reference designs provide developers with hardware and software ready for rapid product implementation and deployment, for fully system tested end equipment applications.

DSP Starter Kits

Starting at just U.S. \$395, Digital Signal Processing Starter Kits (DSKs) and eZdsp™ Starter Kits are a low-cost entry-level means of evaluating TI processor platforms and eXpressDSP development tools. TI, partnered with Spectrum Digital Inc., offers a variety of processor selections in each platform to let developers test algorithms, benchmark code and write simple programs to prove out designs and evaluate the processor architecture. The DSKs are bundled with a special Code Composer Studio (CCStudio) IDE that runs exclusively through the embedded emulation on the target board, so that developers can explore the rich feature set that CCStudio IDE has to offer. Nearly a dozen DSKs are available today for the TMS320C2000, TMS320C5000 and TMS320C6000 processor platforms.

DaVinci Development Tools/Kits

Comprehensive ARM®/DSP system-level tooling helps developers jump start development of any digital video application.

The DaVinci kits are designed to simplify development of digital video applications such as video phones, automotive infotainment, digital still cameras, streaming media, IP set-top boxes, video security systems and digital video products that have yet to be invented.

- **Digital Video Development Platform (DVDP)** includes both hardware and software to enable immediate evaluation of DaVinci DSP-based processors. Available today for both the TMS320DM648 and TMS320DM6437 digital media processors, the DVDP provides developers with a comprehensive platform that can be used throughout the entire design process.
- **Digital Video Evaluation Module (DVEVM)**, comprised of both hardware and software, enables developers to start instantaneous evaluation of DaVinci ARM9-based processors and begin building digital video applications. Available today on TMS320DM6446, TMS320DM355 and TMS320DM6467 digital media processors.
- **Digital Video Software Production Bundle (DVSPB)**, recommended for Linux developers going into production with DaVinci ARM9-based processors, is a software development bundle designed to tune complex DaVinci-based digital video systems quickly and efficiently. The DVSPB combines MontaVista's proven Linux OS and system-tested Linux board support package with the eXpressDSP™ Linux-based Digital Video Software Development Kit (DVSDK) providing developers with improved software integration and system visibility. The DVSPB includes a one-year subscription to the MVZone and MontaVista's Dev Rocket IDE. DSP developers may wish to take advantage

eXpressDSP™ Software and Development Tools



of the DVSPB product bundled with TI's eXpressDSP Code Composer Studio IDE and Spectrum Digital's XDS560R JTAG emulator.

Whether you are just starting a project and need to determine which processor best suits your application or beginning product design, TI's Starter Kits, Evaluation Modules and Development Platforms offer

developers bundled solutions designed to simplify and accelerate the application design process from concept through production.

DaVinci™ Development Tools and Software

Evaluation, Development and Production Kits

Get more information on DaVinci development tools and software at: www.ti.com/davincitools

TI offers a wide range of development tools specifically for aiding DaVinci technology-based design. For a complete list, visit www.ti.com/davincitools.

	DaVinci ARM® and ARM+DSP Tools					DaVinci DSP	
	Evaluation and Development			Production		Evaluation, Development and Production	
	DM6446	DM355	DM6467			DM6437	DM648
	DVEVM	DVEVM	DVEVM	DVSPB-L	DVSPB-3L	DVDP	DVDP
	US \$2,495	US \$495	US \$1,995	US \$6,995	US \$10,995	US \$495	US \$1,295
Hardware							
DaVinci target board	✓	✓	✓			✓	✓
Video camera/LCD	✓						
Power supply w/ US, EU and UK cables	✓	✓	✓			✓	✓
Connectivity cables	✓	✓	✓			✓	✓
Mass storage	40-GB HDD	2-GB NAND Flash	40-GB HDD				
IR remote control	✓	✓	✓				
XDS560R USB EMU					✓		
On-board EMU						✓	
Software							
Linux-based DVSDK	✓	✓	✓	✓*	✓*		
DSP/BIOS™ kernel-based DVSDK						✓	✓
MontaVista Linux Pro	Demo	Demo	Demo	License	License		
Third-party software demos and evals	GHS MULTI®						Ittiam
C64x+™ Linux code-generation tools	Eval		Eval	✓*	✓*	Eval	
Code Composer Studio™ IDE v3.3					License	H/W version	Eval
VLIB Software Library†						✓	

* Available through www.ti.com/davincisoftwareupdates with EVM registration.

† VLIB demonstration requires the TMS320DM6437 Digital Video Development Platform (DVDP) based on DaVinci™ technology. For more information or to request access, go to www.ti.com/vlib.



eXpressDSP™ Software and Development Tools

OMAP™ Development Tools and Software

Evaluation, Development and Production Kits

Get more information on OMAP development tools and software at: www.ti.com/omaptools

OMAP ARM Evaluation and Development	OMAP3503 EVM US \$1,495	OMAP-L137 Starter Kit US \$395
Hardware		
OMAP target board	✓	✓
Power supply with US, EU, and UK cables	✓	✓
Connectivity cables	✓	✓
Memory	64-MB mobile DDR SDRAM 128-MB NAND Flash	4-MB serial Flash 64-MB SDRAM
Display with touch screen	✓	
On-board emulation		✓
Software		
TI platform support (SDK)	✓	
TI DVSDK	✓*	✓*
Linux BSP (kernel 2.6.22)	✓	✓*
WinCE BSP	✓*	
Third-party development tools (evaluation)**	✓*	
Code Composer Studio IDE (tied to hardware)		✓
MontaVista Pro 5		Demo

* Available through www.ti.com/omapsoftwareupdates with EVM registration

** Sourcery G++™ evaluation tools from CodeSourcery™ ARM RVDS Evaluation IDE and Microsoft Visual Studio Evaluation tools

DSP Development Tools

Evaluation and Development Kits

Get more information on DSP development tools and software at: www.ti.com/dspdevkits

DSP Starter Kits

Part Number	Description
TMDSDSK6713	TMS320C6713 DSP Starter Kit (DSK)
TMDSDSK6416-T	TMS320C6416 DSP Starter Kit (DSK)
TMDSDSK6455	TMS320C6455 DSP Starter Kit (DSK)
TMDSDSK5416	TMS320C54x™ DSP Starter Kit (DSK)
TMDSDSK5510	TMS320C55x™ DSP Starter Kit (DSK)
TMDSDSK5509	TMS320C5509 DSP Starter Kit (DSK)
TMDXEZ28044	TMS320F28044 eZdsp™ Starter Kit
TMDSEZD2407	TMS320LF2407A eZdsp Starter Kit
TMDSEZD2812	TMS320F2812 eZdsp Starter Kit
TMDSEZS2812	F2812 eZdsp Starter Kit (Socketed)
TMDSEZS2808	F2808 eZdsp Starter Kit (Socketed)
TMDXEZ28335	TMS320F28335 eZdsp Starter Kit



A Wide Variety of DSP Solutions

Utilize the TI DSP Developer Network for:

- **Complete solutions** – Members offer complete solutions for quickly solving application problems. Most solutions incorporate TI's data converters, power management devices and other quality TI devices.
- **Reduced time to market** – Time-consuming programming and troubleshooting tasks can be eliminated by utilizing proven hardware, software, algorithms and libraries from members.
- **Lower costs** – Don't spend time and money recreating something that has already been produced. Members enable you to dedicate your resources to producing value-added, application-specific products.
- **Additional expertise** – Members provide consulting services, training, integration, contract engineering, research and development and much more. They are an extra resource to assist you with your product development efforts.

eXpressDSP™-Compliant Products

Texas Instruments, in conjunction with its industry-leading DSP Developer Network, offers an array of eXpressDSP-compliant algorithms designed to reduce system integration time and lower support and development costs by eliminating custom coding tasks. Third parties also provide eXpressDSP-compliant plug-in tools to reduce development time.

TI DSP Developer Network Overview

More than 200 independent DSP Developer Network members provide a vital link between TI silicon and the final application by providing additional hardware, algorithms and libraries, software tools and consulting services.

Products/services include:

- **End-Equipment Solutions** – Production-ready, DSP/SoC application-specific resources and collateral bundles, inclusive of block diagrams, application notes, tools, software and other full end-equipment solution-related information
- **Embedded Software** – Production-tested, application-targeted software components, optimized at the processor-specific level, for popular industry standards
- **Engineering Services** – DSP/SoC generation-specific hardware and software design, manufacturing and consulting services, ranging from board level designs to full-turnkey support
- **Development Tools** – DSP/SoC generation-specific physical development of evaluation boards and kits, application-targeted companion chips and cards, and other development resources such

Get additional information and search for Developer Network products and services at:

www.ti.com/dspdevnetwork

as emulation tools, reference designs, documentation and user guides

DSP Developer Network Product Catalog on TI's Website

For information regarding the vast array of products available from TI's DSP Developer Network, check out:

www.ti.com/dspdevnetwork. Extensive information can be found through searchable listings of members located worldwide. Search hundreds of listings by company, device supported, keyword, product name or product category.

DSP Developer Network Logo Indicates TMS320™ Processor-Based Solution

Registered TI DSP Developer Network members use a distinctive DSP Developer Network logo on various printed and electronic collateral. Look for the logo to identify companies that are ready to provide a TMS320

processor-based solution.



Embedded Software

- Operating systems
- Codecs and algorithms
- Application-specific libraries
- Framework software
- Drivers
- Signal-processing libraries

Development Tools

- Compilers, assemblers, linkers
- Evaluation modules and development boards
- Debuggers
- Emulators/Analyzers
- Daughter cards
- Free evaluation tools

Engineering Services

- Digital hardware/board design
- Software design services
- Full turnkey design services
- Analog/RF/Power designs
- Manufacturing
- Consulting

End-Equipment Solutions

- Video and imaging
- Communications and telecom
- Security
- Wireless

Solutions to reduce development time.


Digital Signal Processing Development Tools Feature Matrix

TI Part Number	Tool Description	Annual Subscription	Code Composer Studio IDE	DSP/BIOS™ Real-Time Operating System/Kernel Services	TMS320™ DSP Algorithm Standard Developer's Kit	Code-Generation Tools C/C++ Compiler/Assembler/Linker	Target Board (Hardware)	Standalone Emulator	Linux DVSDK	DSP/BIOS DVSDK	Price \$ U.S.1
TMDSCCSALL-1	Code Composer Studio™ (CCStudio) IDE Development Tools Platinum Edition	X	X	X	X	X					3,595
TMDSCCS2000-1	C2000 Code Composer Studio IDE Development Tools ²	X	X ²	X ²	X	X ²					495
SPRC119	Code Composer Studio IDE Free Evaluation Tools		L	L	X	L					Free
TMDXEVM3503	OMAP35x Evaluation Module (EVM)						X	X ⁶			1,495
TMDXOSKL137BET	OMAP-L137/TMS320C6747 Floating Point Starter Kit		X ³	X ³	X	X ³	X	X ⁶			395
TMDSEVM355	DM355 Digital Video Evaluation Module (DVEVM)						X	X			495
TMDSEVM6446	DM644x Digital Video Evaluation Module (DVEVM)						X	X			2,495
TMDSEVM6467	DM6467 Digital Video Evaluation Module (DVEVM)						X	X			1,995
TMDSDVP6437	DM6437 Digital Video Development Platform (DVDP)		X ³	X ³	X	X ³	X			X	495
TMDXDVP648	DM648 Digital Video Development Platform (DVDP)		L	L	X	L	X			X	1,295
TMDSDVSPBA9-L	MontaVista Pro Digital Video Software Production Bundle (DVSDP)	X ⁴						X			6,995
TMDSDVSPBA9-3L	MontaVista Pro Digital Video Software Production Bundle w/ CCStudio+EMU	X ⁴	X	X	X	X	X	X			10,995
TMDXEVM6474	TMS320C6474 Evaluation Module		X ³	X ³	X	X ³	X				1,995
TMDXEVM6424	C6424 Evaluation Module		X ³	X ³	X	X ³	X				495
TMDXEVM6452	C6452 Evaluation Module						X				1,295
TMDSDSK6713	C6713 DSP Starter Kit (DSK) ⁵		X ³	X ³	X	X ³	X				395
TMDSDSK6416-T	C6416 DSP Starter Kit (DSK) ⁵		X ³	X ³	X	X ³	X				495
TMDSDSK6455	C6455 DSP Starter Kit (DSK)		X ³	X ³	X	X ³	X				595
TMDXEVM6455	C6455 Evaluation Module w/ SRIO ⁵		X ³	X ³	X	X ³	X				1,795
TMDXEVM642	DM642 Evaluation Module						X				1,995
TMDSDMK642	DM642 Digital Media Development Kit	X	X	X	X	X	X	X			6,495
TMDXVSK642	Video Security Over Internet Protocol (VSIP) Development Platform ⁵	X	X	X	X	X	X	X			15,000
TMDXVSK642-3	Video Security Over IP (VSIP) with ATEME Emulator (NTSC) ⁵	X	X	X	X	X	X	X			16,000
TMDSPDK6727	Pro Audio Development Kit (PADK)						X				1,995
TMDSPDB6727	Pro Audio Development Kit (PADK) Bundle	X	X	X	X	X	X	X			5,995
TMDSDSK5416	C54x™ DSP Starter Kit (DSK) ⁵		X ³	X ³	X	X ³	X				395
TMDSDSK5510	C55x™ DSP Starter Kit (DSK) ⁵		X ³	X ³	X	X ³	X				395
TMDSDSK5509	C5509 DSP Starter Kit (DSK) ⁵		X ³	X ³	X	X ³	X				495
TMDXEZ28335	F28335 eZdsp™ Starter Kit		X ³	X		X	X				495
TMDS3P701016A	LF2407A Evaluation Module (EVM) ⁵		X			X	X	X			1,995
TMDXEZ28044	F28044 eZdsp Starter Kit		X ³			X	X				495
TMDSEZD2407	LF2407A eZdsp Starter Kit ⁵		X ³			X	X				345
TMDSEZD2812	F2812 eZdsp Starter Kit ⁵		X ³	X		X	X				395
TMDSEZS2812	F2812 eZdsp Starter Kit (Socketed) ⁵		X ³	X		X	X				495
TMDSEZS2808	F2808 eZdsp Starter Kit (Socketed)		X ³	X		X	X				495
TMDSEMU2000U	C2000 Blackhawk USB JTAG Emulator							X			299
TMDSEMU560PCI	XDS560™ Blackhawk PCI-Bus High-Performance JTAG Emulator							X			2,995
TMDSEMU560U	XDS560 Blackhawk USB High-Performance Emulator							X			2,999
TMDSEMU560T	XDS560 USB Trace Emulator							X			9,995
TMDSEMU510U	XDS510™-Class USB Plus JTAG Emulator (SDI)							X			1,895

¹ Prices are quoted in U.S. dollars and represent year 2009 suggested resale pricing. All prices are subject to change. Customers are advised to obtain the most current and complete pricing information from TI prior to placing orders. TI may verify final pricing prior to accepting any order.

² C2000 target support only. DSP/BIOS kernel and C++ compiler are supported on C28x platform only.

³ Code Composer Studio IDE is limited to use with the target hardware board ONLY.

⁴ MontaVista Pro license

⁵ Orderable part number will vary to specify European power cords

⁶ Available at www.ti.com/omapsoftwareupdates with EVM registration

X = included L = Full featured – Limited to 120 days



How to Effectively Implement Trace

Trace provides a detailed, historical account of application code execution, timing and data accesses, which is particularly useful to locate bugs and for performance analysis. Additionally, since Trace works in real-time, it does not impact the execution of the system.

Embedded Trace Buffer (ETB) is an on-chip circular memory buffer where the compressed trace information is stored. Since the trace receiver is on the chip itself, an XDS560™ Trace emulator and special trace connector are not required. All that is required is a JTAG emulator (ex: Blackhawk XDS560 USB). The size of the buffer depends on the chip implementation. Typical sizes are 2k, 4k and 8k but due to compression, the user will get roughly 10k to 30k lines of program trace. This buffer operates as a circular buffer, continuously capturing trace information until halted.

Once activated, the on-chip trace buffer will continuously capture trace information. This allows a user to run their application to the point of failure and then look at the

history of code execution. The trace system can either be stopped by the user halting the core and/or by using one of the advanced event triggers, such as data watchpoint to halt on data access.

If data trace is enabled, then data access such as reads, writes or both can be included in the trace information. This provides a developer with a full view of code operation, making it possible to verify the data address and value written by the software.

The use of tracing can be particularly useful for investigating intermittent and real-time failures, which can be difficult to identify through traditional debug methods that require stopping and starting the processor. The use of hardware tracing can significantly reduce the amount of time needed to find these failures.

ETB can be used with TI's ARM926-based processors (TMS320DM646x, TMS320DM644x, TMS320DM643x and TMS320DM3x devices), or select TMS320C64x+™ processors.

For the example below, a device that includes an ETB and a JTAG emulator (XDS560) are needed along with Code Composer Studio™ (CCStudio) IDE version 3.3.

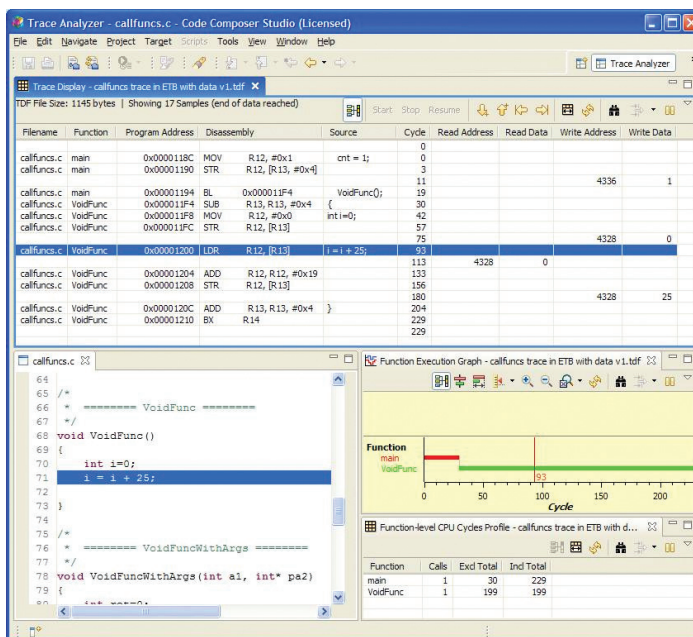
Brief Tutorial

1. Setup CCStudio setup configuration to include the ETB.
2. Connect to the target (including the ETB).
3. Select the ETB as the receiver type in the XDS560 Trace system control panel. (Tools→XDS560 Trace→Control)
4. Turn the trace system ON by going to the Unified Breakpoint Manager (Debug→Breakpoints) and create a “Trace” operation. Select the action to be “Trace ON” and check the box for “Program Address” and “Data”. Enable the action and submit it. The trace system is ready!
5. Run your program to collect trace. If you know your point of failure, halt the core at that point. By default, the trace system will start/stop with the core. This means that every Run, Step and Halt operation will refresh the Trace Display with trace information.

Example

In the example below, a trace has been collected with program, data read and data write information. This is incredibly valuable because the entire program operation can be seen, and with data trace, the programmer can validate that the program loads/stores addresses and values. This helps to quickly catch address mistakes and calculation problems.

The C code, “i=i+25,” and the load (LDR) instruction load address and value can both be verified. The subsequent ADD instruction and its store to memory can also be seen.



Program and data tracing display with source-code correlation, run-time graph and function profiler.

Read more about real-time debug at www.ti.com/etb



Technical Article – DSP/BIOS™ Link

Interprocessor Communication for GPP + DSP Designs

DSP/BIOS Link is foundation software for the inter-processor communication across the GPP (general-purpose processor)-DSP boundary. It provides a generic API that abstracts the software application from the specific physical characteristics of the physical link connecting a GPP and a DSP. It eliminates the need for customers to develop such software from scratch and allows them to focus more on application development.

This software can be used across platforms:

- Using SoC (System on Chip) with GPP and one or more DSPs
- With discrete GPP and one or more DSPs
- Using SoC connected to one or more DSPs

As the name suggests, DSP/BIOS is expected to be running on the DSP. No specific operating system is mandated to be running on the GPP. DSP/BIOS Link is provided in two forms: a version that is pre-ported to Linux and a generic porting kit that includes a reference port to a

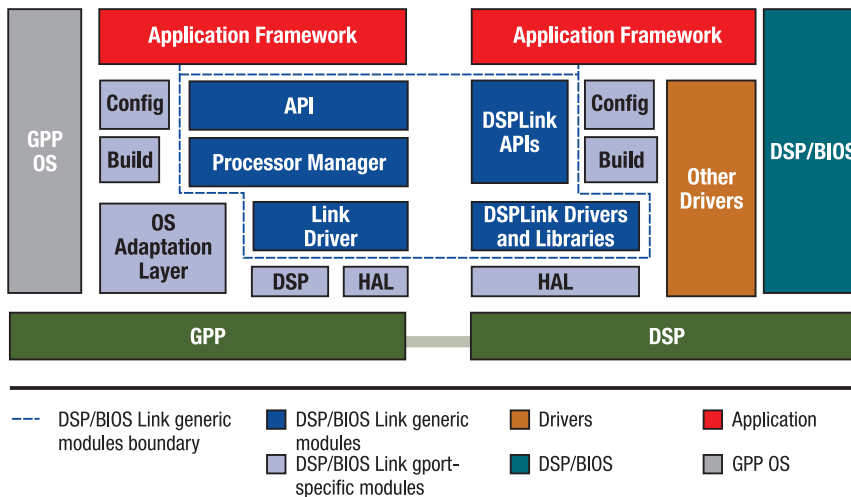
real-time operating system. Both release packages contain full source code to enable customers to port it to their specific platforms and/or operating systems.

Depending on the supported platform, OS and DSP/BIOS Link version, DSP/BIOS Link provides a subset of the following services to its clients:

- PROC: Basic processor control
- After setting up the DSPLink driver, GPP process attaches to the DSP: Sets up the system to allow access to DSP resources from GPP
- GPP loads the DSP with DSP executable present in GPP file system
- GPP starts the DSP
- GPP stops the DSP execution
- GPP process detaches from the DSP and finalizes the DSPLink driver
- Inter-processor communication protocols
- Complete protocols for different types of data transfer between the processors
- Each protocol meets a different data transfer need
 - MSGQ: Message queue
 - CHNL: SIO/streaming based on issue-reclaim model

- RingIO: Circular ring buffer based data streaming
- Inter-processor communication building blocks
- Low-level building blocks used by the protocols
- Each building block is also exposed as APIs to allow framework writers to define their own application-specific protocols
 - POOL: Memory Manager: shared/non-shared
 - NOTIFY: Interrupt abstraction and de-multiplexing for notification of user events
 - MPCS: Multi-processor critical section for mutually exclusive access to shared objects
 - MPLIST: Multi-processor doubly linked circular list
 - PROC_read/PROC_write: Read from or write to DSP memory

DSP/BIOS Link is provided as a no-charge, royalty-free download at www.ti.com/dspbioslink



DSP/BIOS link facilitates communication between microprocessors and DSPs either on the same chip or discrete devices on a board.

TI Worldwide Technical Support

Internet

TI Semiconductor Product Information Center Home Page

support.ti.com

TI Semiconductor KnowledgeBase Home Page

support.ti.com/sc/knowledgebase

Product Information Centers

Americas	Phone	+1(972) 644-5580
Brazil	Phone	0800-891-2616
Mexico	Phone	0800-670-7544
	Fax	+1(972) 927-6377
	Internet/Email	support.ti.com/sc/pic/americas.htm

Europe, Middle East, and Africa

Phone

European Free Call	00800-ASK-TEXAS (00800 275 83927)
International	+49 (0) 8161 80 2121
Russian Support	+7 (4) 95 98 10 701

Note: The European Free Call (Toll Free) number is not active in all countries. If you have technical difficulty calling the free call number, please use the international number above.

Fax	+ (49) (0) 8161 80 2045
Internet	support.ti.com/sc/pic/euro.htm

Japan

Fax	International	+81-3-3344-5317
	Domestic	0120-81-0036
Internet/Email	International	support.ti.com/sc/pic/japan.htm
	Domestic	www.tij.co.jp/pic

Important Notice: The products and services of Texas Instruments Incorporated and its subsidiaries described herein are sold subject to TI's standard terms and conditions of sale. Customers are advised to obtain the most current and complete information about TI products and services before placing orders. TI assumes no liability for applications assistance, customer's applications or product designs, software performance, or infringement of patents. The publication of information regarding any other company's products or services does not constitute TI's approval, warranty or endorsement thereof.

Asia

Phone

International	+91-80-41381665
Domestic	<u>Toll-Free Number</u>
Australia	1-800-999-084
China	800-820-8682
Hong Kong	800-96-5941
India	1-800-425-7888
Indonesia	001-803-8861-1006
Korea	080-551-2804
Malaysia	1-800-80-3973
New Zealand	0800-446-934
Philippines	1-800-765-7404
Singapore	800-886-1028
Taiwan	0800-006800
Thailand	001-800-886-0010

Fax	+886-2-2378-6808
Email	tiasia@ti.com or ti-china@ti.com
Internet	support.ti.com/sc/pic/asia.htm

Safe Harbor Statement: This publication may contain forward-looking statements that involve a number of risks and uncertainties. These "forward-looking statements" are intended to qualify for the safe harbor from liability established by the Private Securities Litigation Reform Act of 1995. These forward-looking statements generally can be identified by phrases such as TI or its management "believes," "expects," "anticipates," "foresees," "forecasts," "estimates" or other words or phrases of similar import. Similarly, such statements herein that describe the company's products, business strategy, outlook, objectives, plans, intentions or goals also are forward-looking statements. All such forward-looking statements are subject to certain risks and uncertainties that could cause actual results to differ materially from those in forward-looking statements. Please refer to TI's most recent Form 10-K for more information on the risks and uncertainties that could materially affect future results of operations. We disclaim any intention or obligation to update any forward-looking statements as a result of developments occurring after the date of this publication.

E093008

The platform bar, Code Composer Studio, DaVinci, DSP/BIOS, eXpressDSP, OMAP, RTDX, C54x, C55x, C64x+, TMS320, TMS320C2000, TMS320C5000, TMS320C6000, TMS320C54x, TMS320C55x, TMS320C64x+, XDS510 and XDS560 are trademarks of Texas Instruments. All other trademarks are the property of their respective owners.

IMPORTANT NOTICE

Texas Instruments Incorporated and its subsidiaries (TI) reserve the right to make corrections, modifications, enhancements, improvements, and other changes to its products and services at any time and to discontinue any product or service without notice. Customers should obtain the latest relevant information before placing orders and should verify that such information is current and complete. All products are sold subject to TI's terms and conditions of sale supplied at the time of order acknowledgment.

TI warrants performance of its hardware products to the specifications applicable at the time of sale in accordance with TI's standard warranty. Testing and other quality control techniques are used to the extent TI deems necessary to support this warranty. Except where mandated by government requirements, testing of all parameters of each product is not necessarily performed.

TI assumes no liability for applications assistance or customer product design. Customers are responsible for their products and applications using TI components. To minimize the risks associated with customer products and applications, customers should provide adequate design and operating safeguards.

TI does not warrant or represent that any license, either express or implied, is granted under any TI patent right, copyright, mask work right, or other TI intellectual property right relating to any combination, machine, or process in which TI products or services are used. Information published by TI regarding third-party products or services does not constitute a license from TI to use such products or services or a warranty or endorsement thereof. Use of such information may require a license from a third party under the patents or other intellectual property of the third party, or a license from TI under the patents or other intellectual property of TI.

Reproduction of TI information in TI data books or data sheets is permissible only if reproduction is without alteration and is accompanied by all associated warranties, conditions, limitations, and notices. Reproduction of this information with alteration is an unfair and deceptive business practice. TI is not responsible or liable for such altered documentation. Information of third parties may be subject to additional restrictions.

Resale of TI products or services with statements different from or beyond the parameters stated by TI for that product or service voids all express and any implied warranties for the associated TI product or service and is an unfair and deceptive business practice. TI is not responsible or liable for any such statements.

TI products are not authorized for use in safety-critical applications (such as life support) where a failure of the TI product would reasonably be expected to cause severe personal injury or death, unless officers of the parties have executed an agreement specifically governing such use. Buyers represent that they have all necessary expertise in the safety and regulatory ramifications of their applications, and acknowledge and agree that they are solely responsible for all legal, regulatory and safety-related requirements concerning their products and any use of TI products in such safety-critical applications, notwithstanding any applications-related information or support that may be provided by TI. Further, Buyers must fully indemnify TI and its representatives against any damages arising out of the use of TI products in such safety-critical applications.

TI products are neither designed nor intended for use in military/aerospace applications or environments unless the TI products are specifically designated by TI as military-grade or "enhanced plastic." Only products designated by TI as military-grade meet military specifications. Buyers acknowledge and agree that any such use of TI products which TI has not designated as military-grade is solely at the Buyer's risk, and that they are solely responsible for compliance with all legal and regulatory requirements in connection with such use.

TI products are neither designed nor intended for use in automotive applications or environments unless the specific TI products are designated by TI as compliant with ISO/TS 16949 requirements. Buyers acknowledge and agree that, if they use any non-designated products in automotive applications, TI will not be responsible for any failure to meet such requirements.

Following are URLs where you can obtain information on other Texas Instruments products and application solutions:

Products

Amplifiers	amplifier.ti.com
Data Converters	dataconverter.ti.com
DLP® Products	www.dlp.com
DSP	dsp.ti.com
Clocks and Timers	www.ti.com/clocks
Interface	interface.ti.com
Logic	logic.ti.com
Power Mgmt	power.ti.com
Microcontrollers	microcontroller.ti.com
RFID	www.ti-rfid.com
RF/IF and ZigBee® Solutions	www.ti.com/lprf

Applications

Audio	www.ti.com/audio
Automotive	www.ti.com/automotive
Broadband	www.ti.com/broadband
Digital Control	www.ti.com/digitalcontrol
Medical	www.ti.com/medical
Military	www.ti.com/military
Optical Networking	www.ti.com/opticalnetwork
Security	www.ti.com/security
Telephony	www.ti.com/telephony
Video & Imaging	www.ti.com/video
Wireless	www.ti.com/wireless

Mailing Address: Texas Instruments, Post Office Box 655303, Dallas, Texas 75265
Copyright © 2009, Texas Instruments Incorporated